

# PICTORIAL ASSAY

## CLASSIFICATION OF BANKART AND BANKART VARIANT LESIONS

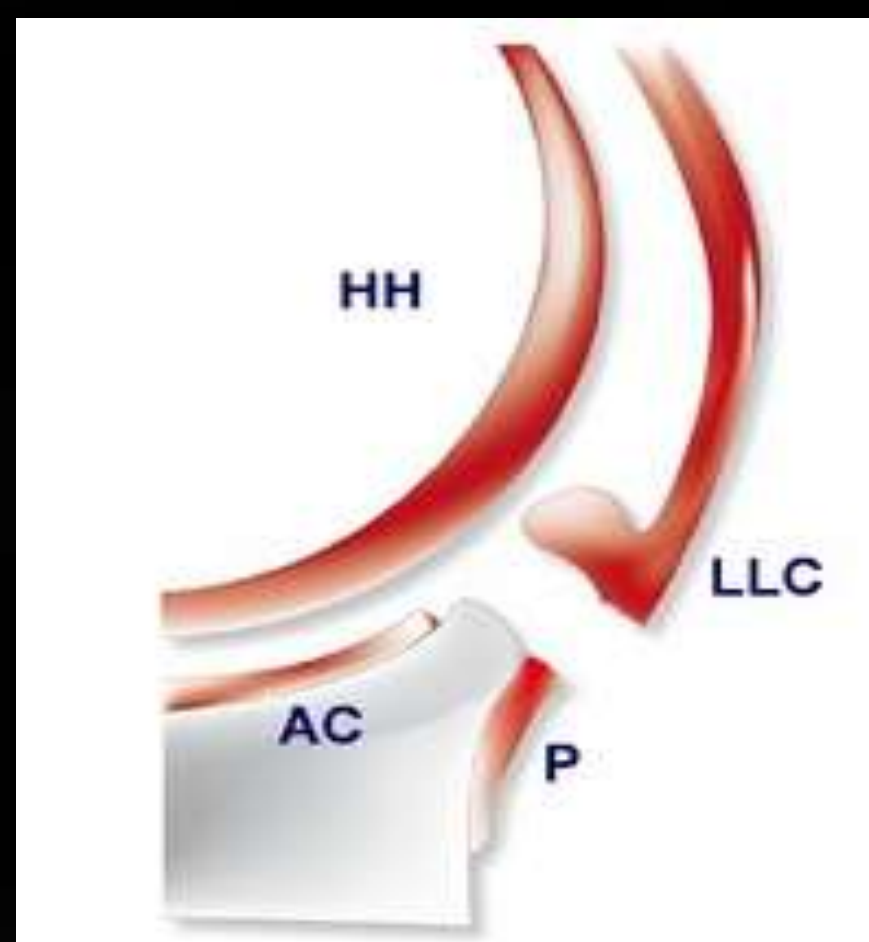


PRESENTING AUTHOR : **DR.DANIEL STANLEY PETER**

COAUTHORS : **PROF.DR.K.VANITHA, PROF.N.KAILASANATHAN, PROF.R.MALATHY, PROF.S.SUNDARESWARAN,PROF.S.KALPANA, PROF.S.BABU PETER, PROF.D.RAMESH, DR.J.DEVIMEENAL, DR.MANIMEKALA,DR.CHEZHIAN.J,DR.GEETHA.K**  
**BARNARD INSTITUTE OF RADIOLOGY, MADRAS MEDICAL COLLEGE**

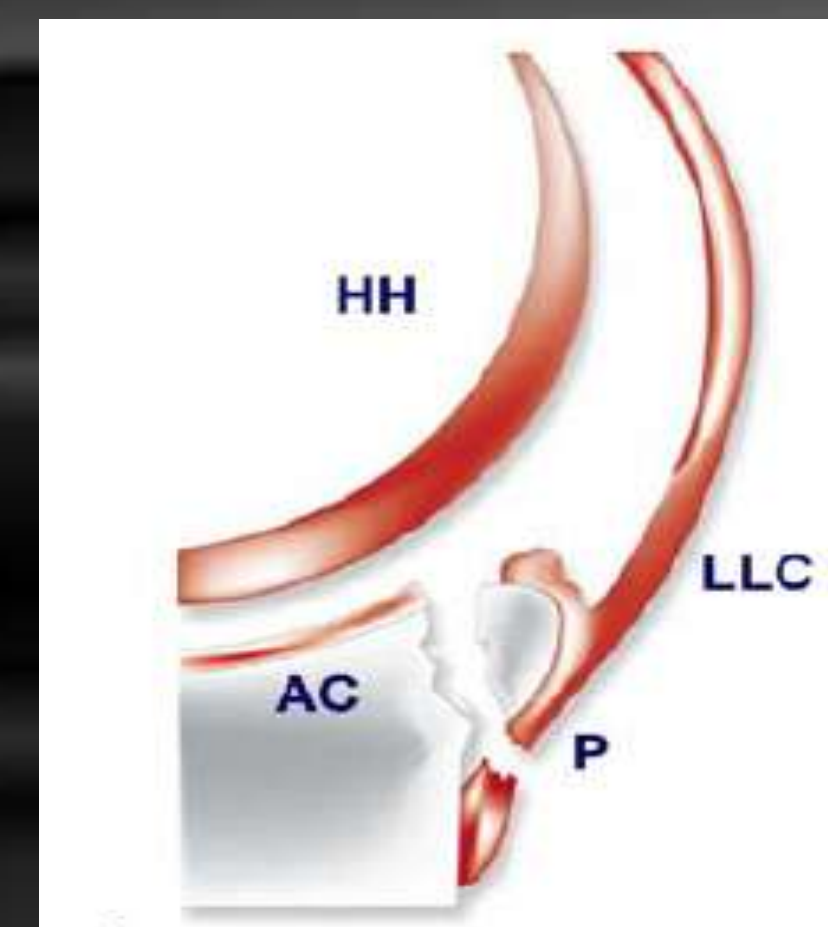


### SOFT TISSUE BANKART LESION



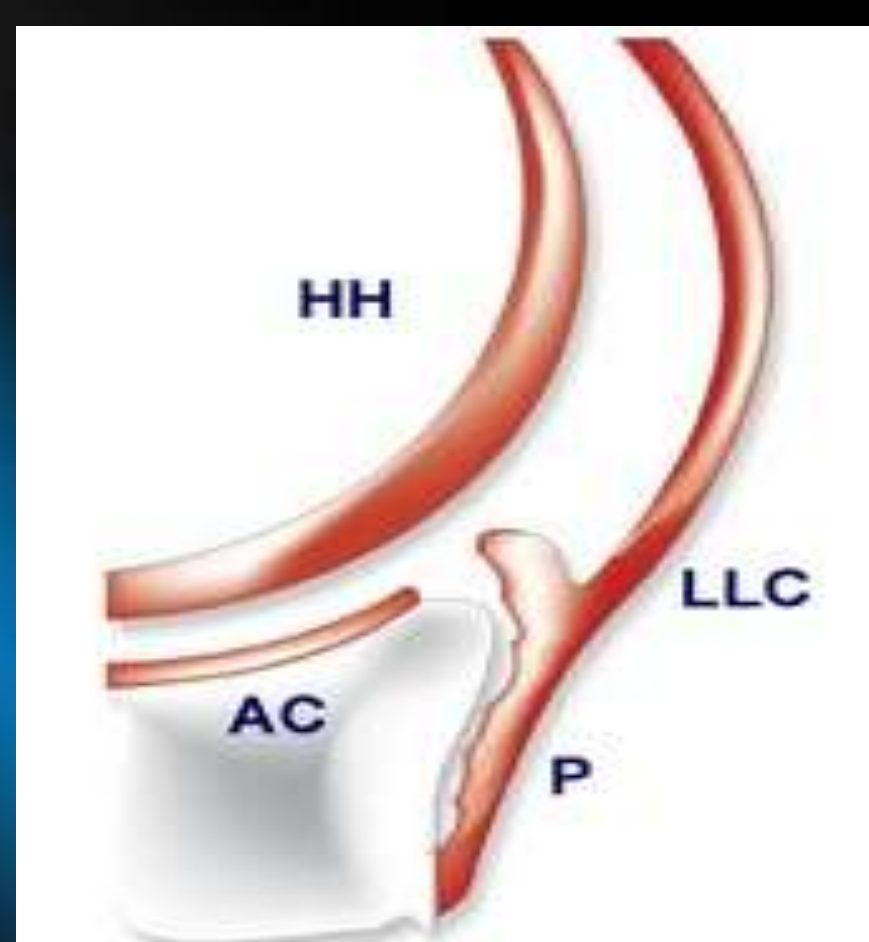
Detachment of the inferior glenohumeral ligament and labrum from the anterior glenoid after anterior dislocation  
 Periosteum ruptured

### BONY BANKART LESION



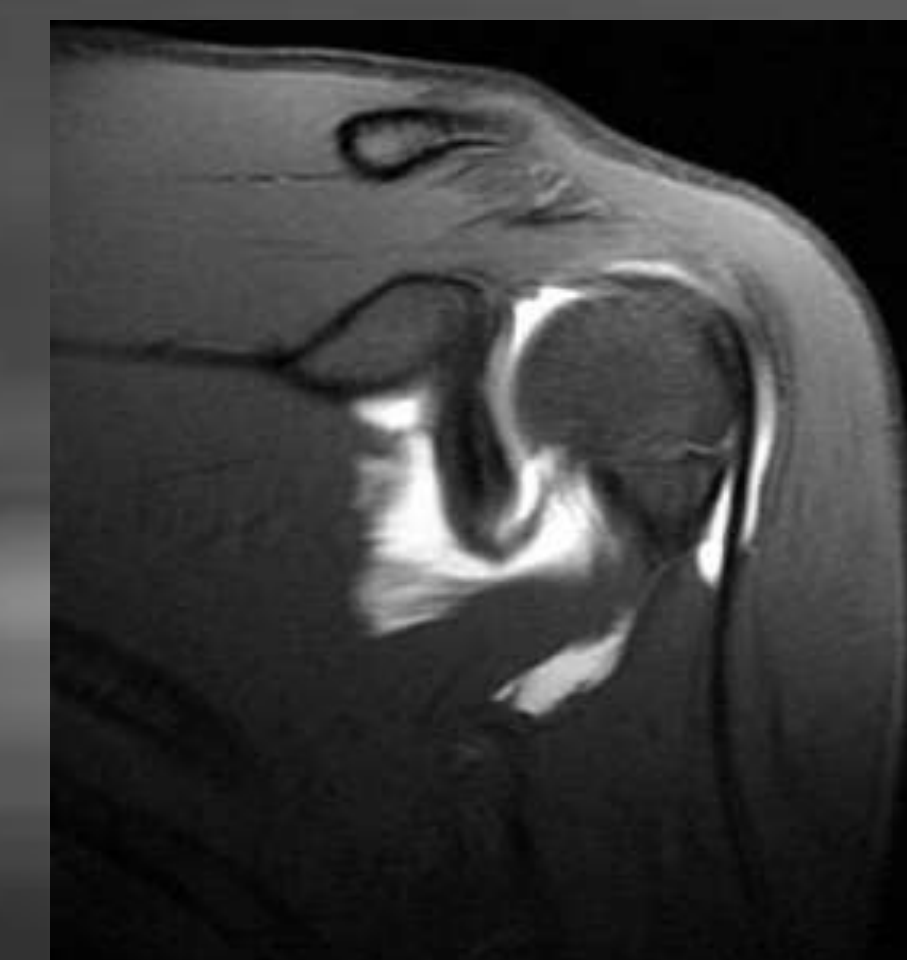
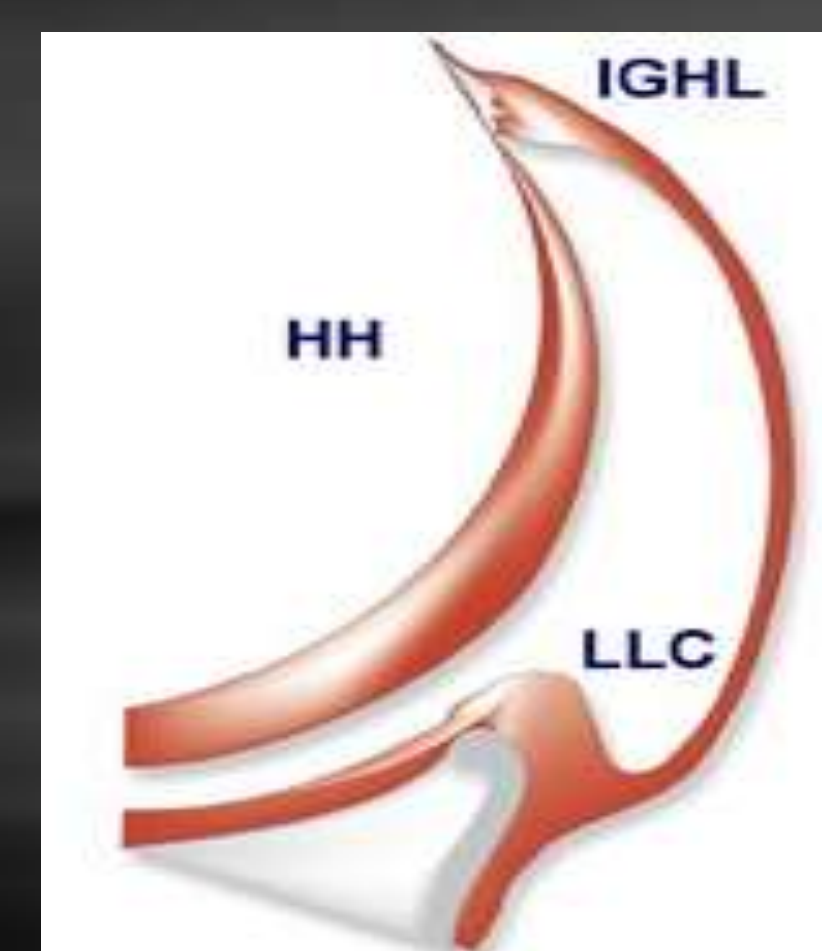
In a bony Bankart lesion an osseous fragment of variable size is avulsed from the anteroinferior glenoid together with the labro-ligamentous complex.

### PERTHES LESION



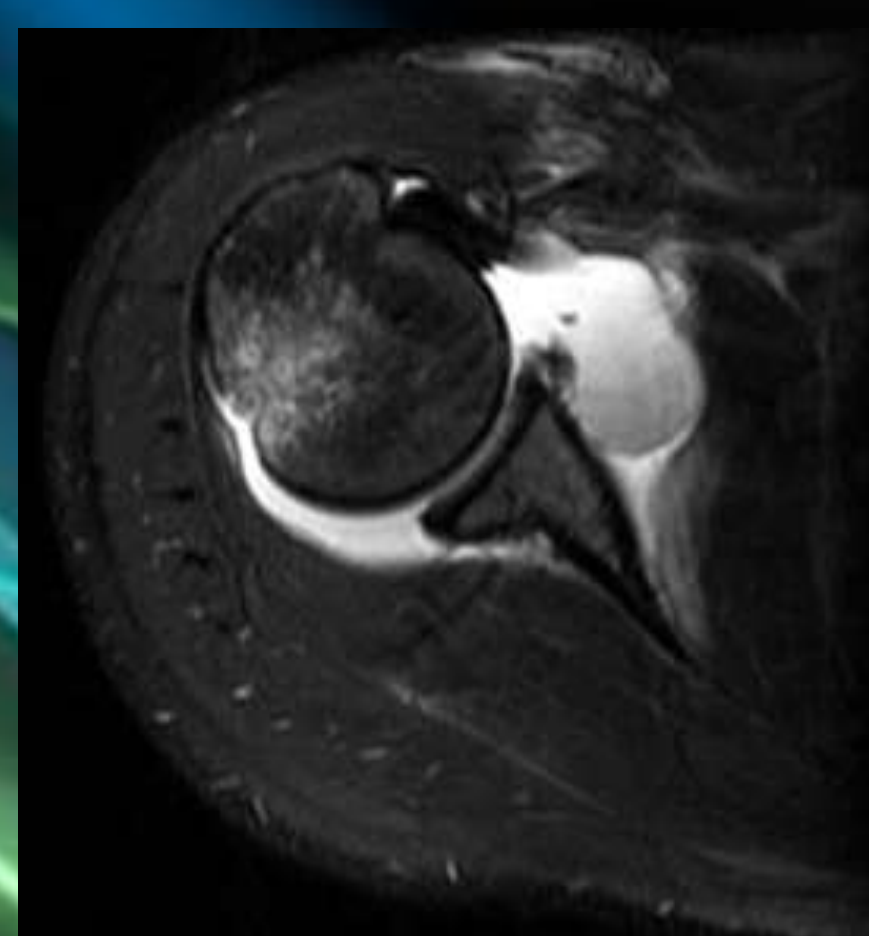
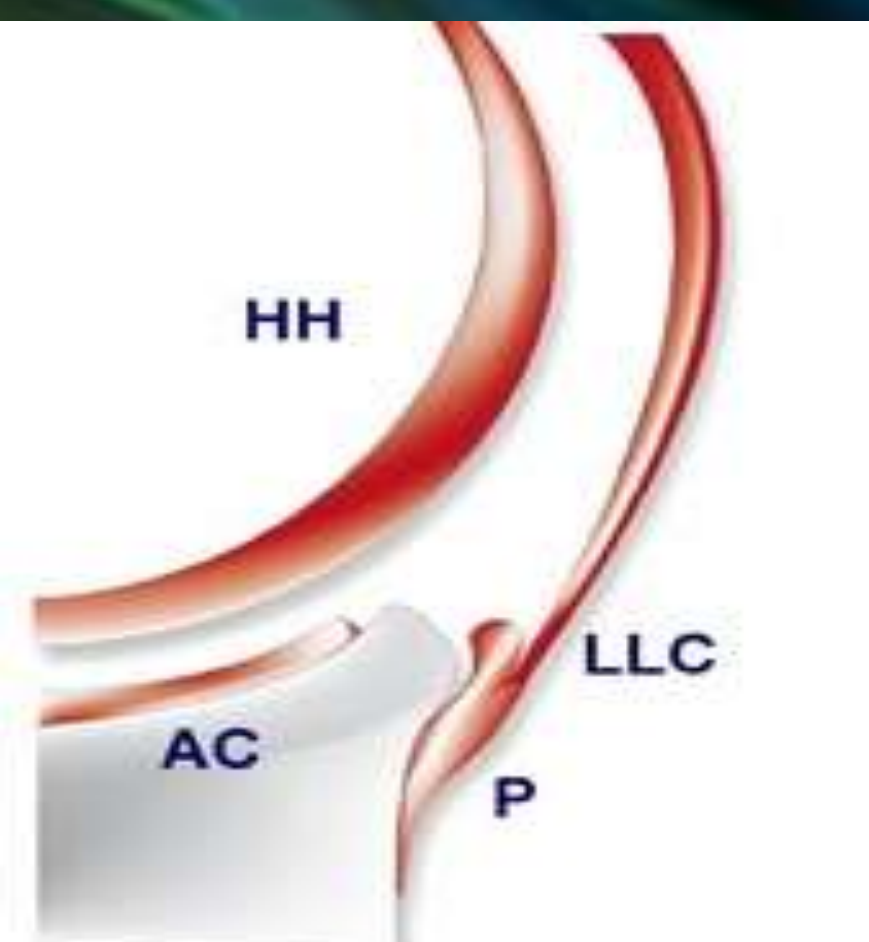
Detached inferior glenohumeral ligamentous complex (IGHLC or IGLLC) with intact scapular periosteum, which is stripped medially

### HAGL [ HUMERAL AVULSION OF GLENOHUMERAL LIGAMENT ]



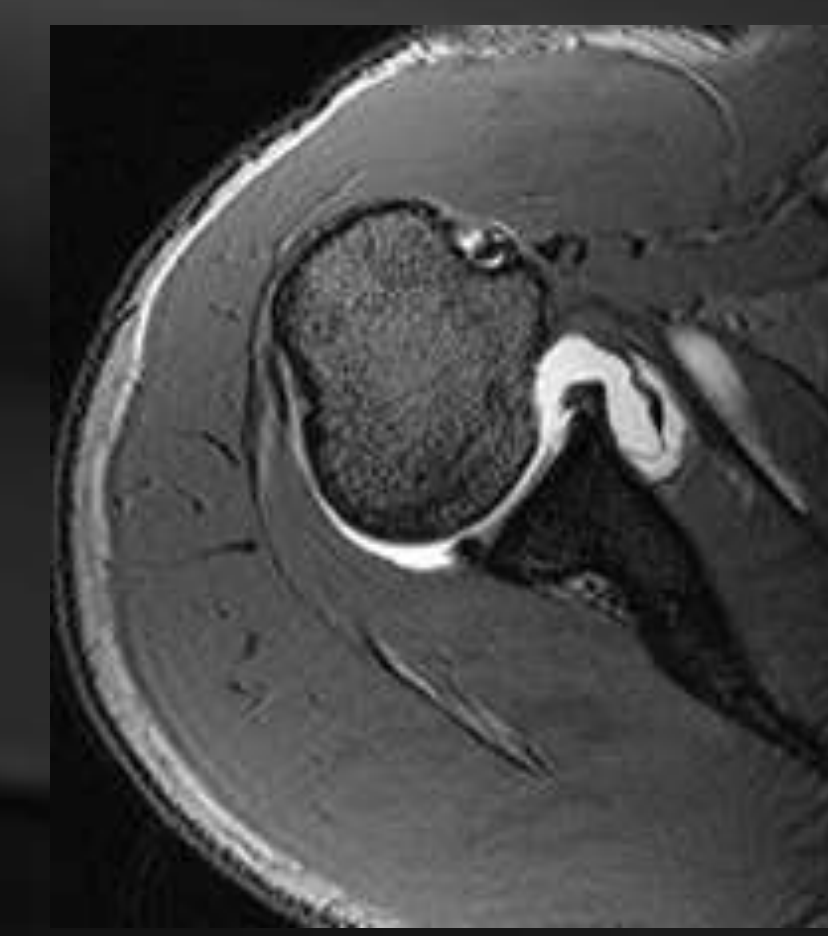
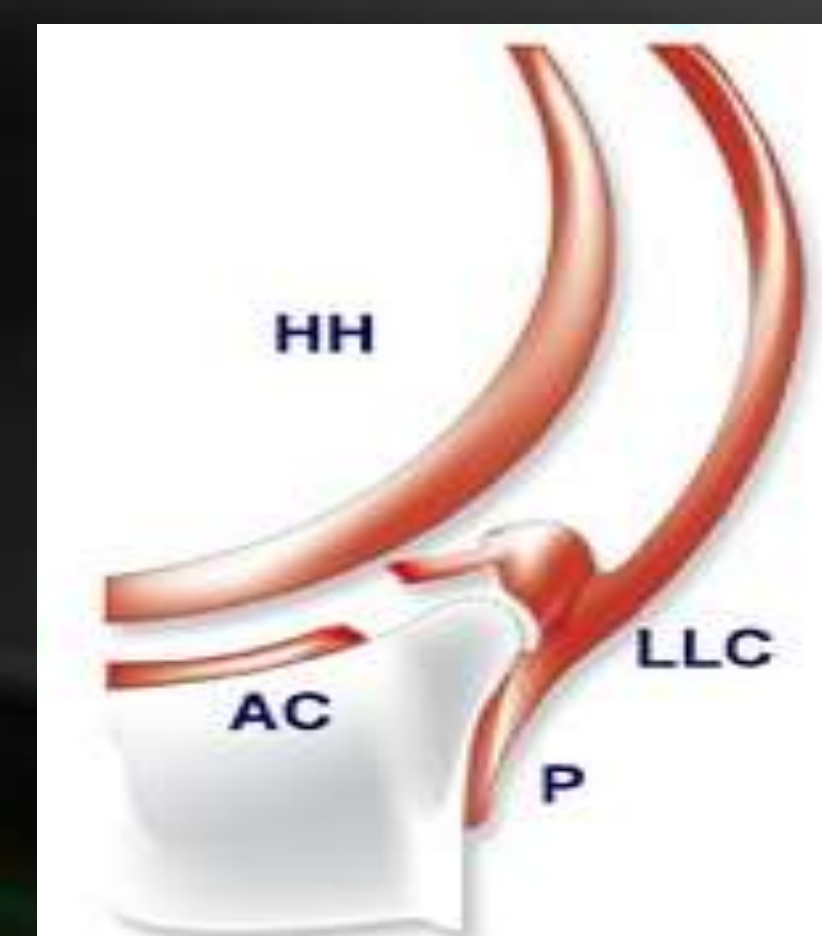
Tearing avulsion of the inferior glenohumeral ligament (IGHL or IGL) attachment to the humerus after anterior dislocation/subluxation

### ALPSA [ ANTERIOR LABRO LIGAMENTOUS PERIOSTEAL SLEEVE AVULSION ]



Avulsion of inferior glenohumeral labroligamentous complex from anterior inferior glenoid with an intact scapular periosteum

### GLAD LESION [ GLENO LABRAL ARTICULAR DISRUPTION ]



Partial tear of the anterior glenoid labrum , adjacent articular cartilage chondral defect Labrum is not detached

### REFERENCES

- Waldt S, Burkart A, Imhoff AB, Bruegel M, Rummeny EJ, Woertler K. Anterior shoulder instability: accuracy of MR arthrography in the Classification of Anteroinferior labroligamentous injuries. Radiology 2005; 237:578-583.
- Beltran J, Rosenberg ZS, Chandhani VP, Cuomo F, Beltran S, Rokito A. Glenohumeral instability: evaluation with MR arthrography. Radiographics 2004 ;345;234-257